

# nyrej

## Vardi of Highcap Group exclusively handles 13,000 s/f parcel for \$7.5 million

[cre.nyrej.com/var-di-highcap-group-exclusively-handles-sale/](http://cre.nyrej.com/var-di-highcap-group-exclusively-handles-sale/)

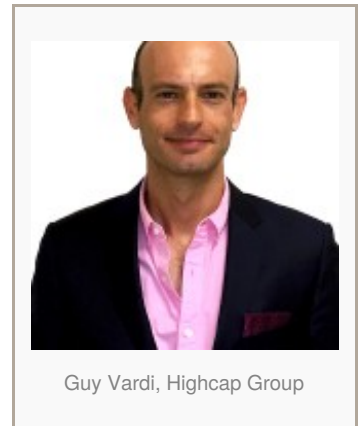
12/6/2016

**Manhattan, NY** Guy Vardi, director investment sales firm Highcap Group, arranged the sale of 1-15 Wadsworth Terr. in the Fort George neighborhood for \$7.5 million.

Vardi exclusively represented the seller, American Development Group LLC and the purchaser, a nursing home operator.

This elongated stretch of raw land totals 13,000 s/f and sits adjacent to Gorman Park, located west of Yeshiva University, offering unobstructed views to the west.

The sellers had approved plans for 40 units totaling 61,151 s/f. However with a community facility bonus in FAR, the site can be grown to 84,500 s/f.





Aerial, 1-15 Wadsworth Terrace – Manhattan, NY